

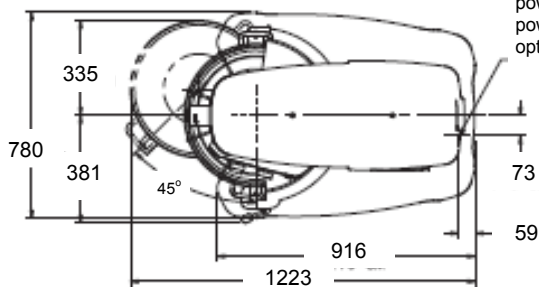
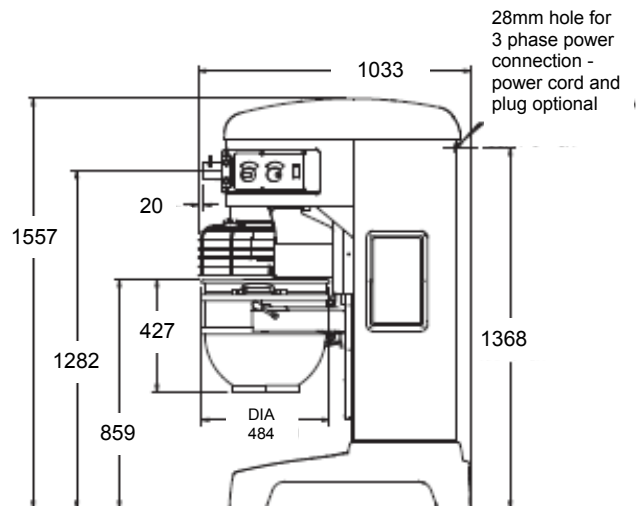
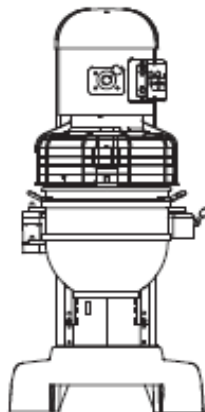
## 60 quart floor mount electronic control planetary mixer with accessories & No. 12 attachment hub



- Stainless steel **easy-on-easy-off bowl safety guard**
- Heavy-duty 2.0kW (2.7HP) motor
- **Gear transmission**
- 4 Speed, plus stir speed electronic control mixer with **SHIFT-ON-THE-FLY™** speed selection
- **Quick release agitators**
- Patented **SOFT START** agitation technology
- 50 minute **SMART TIMER™**
- Automatic time recall
- Large **easy-to-reach** controls
- Single point bowl installation
- Ergonomic **swing-out bowl**
- No. 12 attachment hub
- **Power bowl lift**
- **Easy-clean** open base
- Neoprene footpads as standard
- Optional accessories - Ingredient feed chute, pastry scraper, "I" wire whip, bowl extension, bowl scraper, splash cover and mincing attachment

### Technical Data

Bowl size	60 quart
Speeds	4 fixed plus stir speed with SHIFT-ON-THE-FLY™
Timer	50 minute SMART TIMER™
Safety guard	Stainless steel bowl guard, easy-on-easy-off
Standard inclusions	Stainless Steel Bowl (BOWL-HL60)
	B-Beater (BBEATER-HL60)
	Stainless Steel D-Whip (DWHIP-HL60)
	ED-Dough Hook (EDDOUGH-HL60)
	Bowl truck (TRUCK-HL60)
Drive mechanism	Gear driven
Motor size	2.0kW
Power supply	415/50/3 - 10amp (max 5 amps)
Power cord	Optional - refer to pricing page
Shipping weight	449kg



28mm hole for 3 phase power connection - power cord and plug optional

